

# Sealing boots



## Section H

For toggle, pushbutton and rocker switches

H 2

# Sealing boots

- ❑ Prevent dust, sand and water from getting into switches.
- ❑ On toggle versions, also prevent ice from blocking lever action
- ❑ Compatible with frontal sealing options (K and X408).
- ❑ Available in a wide range of colours.
- ❑ A sealing ring or washer is standard supplied with each boot.

## MATERIALS AND SPECIFICATIONS

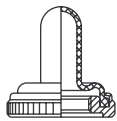
- Boot material : neoprene or silicone (see comparative advantages below)
  - Nut material : brass, nickel plated or matt black
  - Operating temperature :
    - neoprene boots : -20°C to +50°C
    - silicone boots : -40°C to + 85°C
- ++ : excellent, + : good, - : poor

COMPARATIVE ADVANTAGES	TEMPERATURE RANGE		ELASTICITY	MECHANICAL RESISTANCE
	LOW	HIGH		
Silicone	++	++	++	-
Neoprene	-	+	-	++

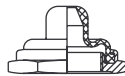
## DIFFERENT TYPES OF BOOTS

\* Colour options available

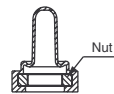
Full-toggle (standard) \*



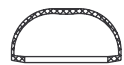
Half-toggle \*



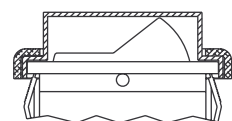
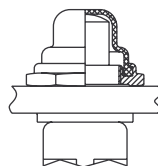
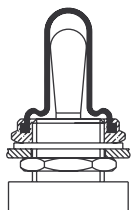
Two-part (no metal parts accessible) \*



For double sealing



## EXAMPLES OF MOUNTING



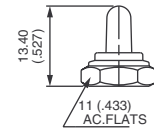
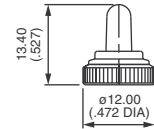
# Sealing boots

For toggle switches

## For bushing $\varnothing 6 \times 0.75$ (.236 x 0.75) - 5500 series



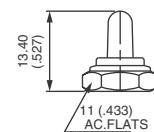
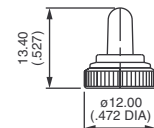
NUT	FULL-TOGGLE SILICONE BOOTS			
	Black	Red	Green	White
<b>Knurled</b> Nickel plated	<b>U1341</b>	<b>U1341-6</b>	<b>U1341-3</b>	<b>U1341-7</b>
<b>Knurled</b> Matt black	<b>U1343</b>	<b>U1343-6</b>	<b>U1343-3</b>	<b>U1343-7</b>
<b>Hex</b> Nickel plated	<b>U1302</b>	<b>U1302-6</b>	<b>U1302-3</b>	<b>U1302-7</b>
<b>Hex</b> Matt black	<b>U1304</b>	<b>U1304-6</b>	<b>U1304-3</b>	<b>U1304-7</b>



## For bushing $\varnothing 6,35-40NS$ (1/4-40UNS) - 5000 and 11000 series



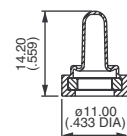
NUT	FULL-TOGGLE SILICONE BOOTS			
	Black	Red	Green	White
<b>Knurled</b> Nickel plated	<b>U1331</b>	<b>U1331-6</b>	<b>U1331-3</b>	<b>U1331-7</b>
<b>Knurled</b> Matt black	<b>U1333</b>	<b>U1333-6</b>	<b>U1333-3</b>	<b>U1333-7</b>
<b>Hex</b> Nickel plated	<b>U1229</b>	<b>U1229-6</b>	<b>U1229-3</b>	<b>U1229-7</b>
<b>Hex</b> Matt black	<b>U1231</b>	<b>U1231-6</b>	<b>U1231-3</b>	<b>U1231-7</b>



## For bushing $\varnothing 6,35-40NS$ (1/4-40UNS) - 5000 and 11000 series



NUT	BOOTS SUPPLIED AS 2 SEPARATE PARTS			
	NEOPRENE	SILICONE		
	Black	Red	Green	White
	<b>U5149</b>	<b>U5149-6</b>	<b>U5149-3</b>	<b>U5149-7</b>

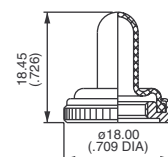


Once the boot is mounted onto the panel, no switch metal part is accessible any more.

## For bushing $\varnothing 10 \times 0.75$ (.393 x 0.75) - 10600 series



KNURLED NUT	FULL-TOGGLE SILICONE BOOTS			
	Black	Red	Green	White
Nickel plated	<b>U1612</b>	<b>U1612-6</b>	<b>U1612-3</b>	<b>U1612-7</b>
Matt black	<b>U1614</b>	<b>U1614-6</b>	<b>U1614-3</b>	<b>U1614-7</b>



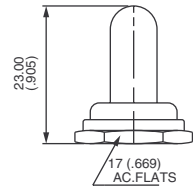
# Sealing boots

For toggle switches

For bushing  $\varnothing$  11,9-32 NS (15/32-32NS) - 12000, 5000M, 3500 and 6000 series



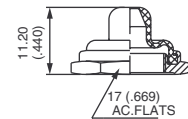
HEX NUT	FULL-TOGGLE SILICONE BOOTS			
	Black	Red	Green	White
Nickel plated	<b>U1031</b>	<b>U1031-6</b>	<b>U1031-3</b>	<b>U1031-7</b>
Matt black	<b>U1024</b>	<b>U1024-6</b>	<b>U1024-3</b>	-



For bushing  $\varnothing$  11,9-32 NS (15/32-32NS) - 12000, 3500 and 6000 series



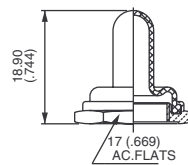
HEX NUT	HALF-TOGGLE SILICONE BOOTS			
	Black	Red	Green	White
Nickel plated	<b>U1600</b>	<b>U1600-6</b>	<b>U1600-3</b>	<b>U1600-7</b>
Matt black	<b>U1602</b>	<b>U1602-6</b>	<b>U1602-3</b>	-



For bushing  $\varnothing$  12 x 0.75 SI (.472x.075 IS) - 4450, 4650 and 1600 series



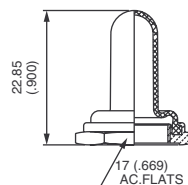
HEX NUT	FULL-TOGGLE BLACK NEOPRENE BOOTS
Nickel plated	<b>U09</b>
Matt black	<b>U223</b>



For bushing  $\varnothing$  12 x 0.75 SI (.472x.075 IS) - 600H, 6-600H, 600SH, 660, 1000, 1500 and 3600



HEX NUT	FULL-TOGGLE SILICONE BOOTS			
	Black	Red	Green	White
Nickel plated	<b>U1565</b>	<b>U1565-6</b>	<b>U1565-3</b>	<b>U1565-7</b>
Matt black	<b>U1567</b>	<b>U1567-6</b>	<b>U1567-3</b>	-
FULL-TOGGLE BLACK NEOPRENE BOOTS				
Nickel plated	<b>U851</b>			
Matt black	<b>U853</b>			



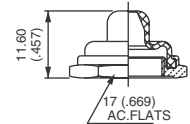
# Sealing boots

For toggle switches or pushbutton switches

For bushing  $\varnothing 12 \times 0.75$  SI (.472x.075 IS) - 600H, 6-600H, 660, 1000 and 3600 series



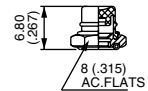
HEX NUT	HALF-TOGGLE SILICONE BOOTS			
	Black	Red	Green	White
Nickel plated	U1151	U1151-6	U1151-3	U1151-7
Matt black	U1153	U1153-6	U1153-3	-
HALF-TOGGLE BLACK NEOPRENE BOOTS				
Nickel plated	U598			
Matt black	U600			



For bushing  $\varnothing 4 \times 0.70$  (.157 x 0.70) - 9500 series



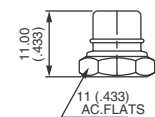
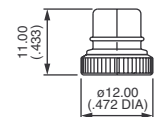
HEX NUT	PUSHBUTTON SILICONE BOOTS			
	Black	Red	Green	White
Nickel plated	U1829	U1829-6	U1829-3	U1829-7
Matt black	U1831	U1831-6	U1831-3	U1831-7



For bushing  $\varnothing 6,35-40$ NS (1/4-40UNS) - 18000, 9000 and 13000 series



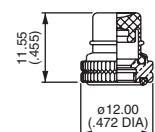
NUT	PUSHBUTTON SILICONE BOOTS			
	Black	Red	Green	White
<b>Knurled</b> Nickel plated	U1401	U1401-6	U1401-3	U1401-7
<b>Knurled</b> Matt black	U1403	U1403-6	U1403-3	U1403-7
<b>Hex</b> Nickel plated	U1318	U1318-6	U1318-3	U1318-7
<b>Hex</b> Matt black	U1320	U1320-6	U1320-3	U1320-7



For bushing  $\varnothing 6,35-40$ NS (1/4-40 UNS) - 8000 series



KNURLED NUT	PUSHBUTTON SILICONE BOOTS			
	Black	Red	Green	White
Nickel plated	U4301	U4301-6	U4301-3	U4301-7



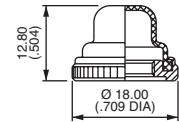
# Sealing boots

For pushbutton switches

For bushing  $\varnothing 10 \times 0.75$  (.393 x 0.75) - 10400 series



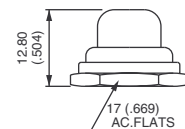
KNURLED NUT	PUSHBUTTON SILICONE BOOTS			
	Black	Red	Green	White
Nickel plated	<b>U1624</b>	<b>U1624-6</b>	<b>U1624-3</b>	<b>U1624-7</b>
Matt black	<b>U1626</b>	<b>U1626-6</b>	<b>U1626-3</b>	<b>U1626-7</b>



For bushing  $\varnothing 11,9-32$  NS (15/32-32UNS) - 13000X778, 13000X768 and 8000-6X934 series



HEX NUT	PUSHBUTTON SILICONE BOOTS			
	Black	Red	Green	White
Nickel plated	<b>U589</b>	<b>U589-6</b>	<b>U589-3</b>	<b>U589-7</b>
Matt black	<b>U590</b>	<b>U590-6</b>	<b>U590-3</b>	-

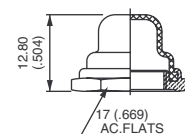


For long plunger (-9) care should be taken over the panel thickness.

For bushing  $\varnothing 12 \times 0.75$  SI (.472x.075 IS) - 1200, 4700 and 4800 series



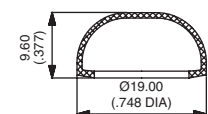
HEX NUT	PUSHBUTTON SILICONE BOOTS			
	Black	Red	Green	White
Nickel plated	<b>U1654</b>	<b>U1654-6</b>	<b>U1654-3</b>	<b>U1654-7</b>
Matt black	<b>U1656</b>	<b>U1656-6</b>	<b>U1656-3</b>	-
	PUSHBUTTON BLACK NEOPRENE BOOTS			
Nickel plated	<b>U31</b>			
Matt black	<b>U225</b>			
Chrome plated	<b>U224</b>			



For double sealing on IP and IB-IS series



SILICONE BOOT	
Transparent	<b>U5125</b>
Blue	<b>U5125-1</b>
Black	<b>U5125-2</b>
Red	<b>U5125-6</b>



Operating temperature : -40°C to +125°C

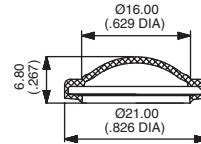
# Sealing boots

For pushbutton switches or rocker switches

## For double sealing on IA series



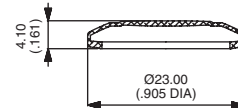
BLACK SILICONE BOOT
<b>U6602</b>



## For AV series (models with Ø 19 mm bushing)



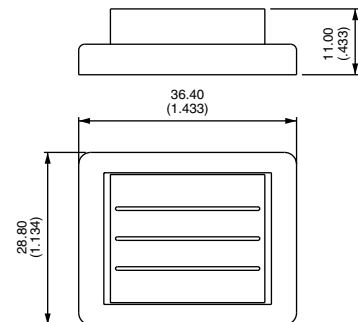
SILICONE BOOT	
Black	<b>U2187-2</b>
Green	<b>U2187-3</b>
Grey	<b>U2187-4</b>
Yellow	<b>U2187-5</b>
Red	<b>U2187-6</b>
White	<b>U2187-7</b>
Transparent	<b>U2187-8</b>



## For 2600 series



TRANSPARENT SILICONE BOOT
<b>U2150</b>



## For FM series



TRANSPARENT PVC BOOT
<b>U5720</b>

